

## FAIRY LAMPS BY L.G. WRIGHT - PART II

by Lloyd and Nan

In Part I,<sup>1</sup> L. G. Wright's hand decorated Peach Blow and Overlay fairy lamps were described. Several uncased pressed glass types that they also made are described here.

In the 1930s glass collectors were finding that 18th and 19th century handblown glass was becoming very scarce and collecting trends turned to early pressed glass patterns. Si Wright was well aware of this and kept track of which patterns were most popular. As early as 1938 "hobnail" and "moon and star" items were in his inventory and these were followed by other popular 19th century collectible patterns. His first fairy lamps in these patterns were made in about 1968 (Ref. 1).

These embossed pressed glass fairy lamps were made in a variety of transparent glass colors and sold either as pressed or with an acid etched satin finish. Each was given a model number, which was usually appended by one or more letters indicating color and type of finish. They were made from Wright molds by a number of different glass companies so variations in hue and color density for nominally the same model are seen. Colors that are found are amber (A), blue (B), crystal (C), canary (or Vaseline) (CY or Va), cobalt (Co), green (G) and ruby (R) in either clear or frosted (F or S for satin) glass. A pale pink (P) was added in the 1990s. Descriptions and pictures of each type follow in approximate order of introduction into the L. G. Wright line. Primary documentation for the years made and colors are in Refs.1 and 2.

The L. G. Wright Glass Co. went out of business in May 1999 and auctioned off all its property including its glass molds. The companies who purchased the molds for the

fairy lamps described in the following were identified in a recent issue of ACRN (Ref. 3). They are Castle Reproductions and A.A. Imports as joint purchasers (Castle/AA); Fenton Art Glass Co. (Fenton); Weishar Enterprises (Weishar); Aladdin Mantle Lamp Co. (Aladdin); Mosser Glass Co. (Mosser); and Unknown bidder #136 (Unknown). It must be assumed that the purchasers intend to use these molds.



Top: 1000 Eye; Embossed Rose; Peach Blow; Hobnail; Moon & Star; Bottom: Thistle; Stipple Star; Overlay; Sweetheart; Eyewinker

**Eyewinker, #25-29** Two-piece with a dome having a ribbed top and a band with the eyewinker pattern around the bottom on a tall base with an eyewinker and 1000 eye pattern around a reduced diameter midsection - 5" h x 3 1/4" d; in A, AS, B, BS, C, CS, G, GS, R and RS (Ref. 4); introduced in about 1968; P and Co offered in 1990s. (Mold sold to Mosser in May 1999).



**Thousand Eye, #46** Three-piece with an all-over 1000 eye pattern on the dome on a matching pedestal base with a crystal candle cup inside (the same as used with the 4-piece cased fairy lamps) - 6 1/8" h x 4" d; in A, AS, B, BS, C, CS, CY, CYS, G, R and RS; introduced in 1969. (Mold sold to Viking Glass Co. in mid-1980s).

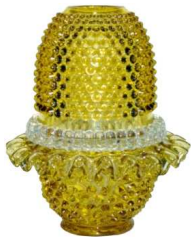
<sup>1</sup> Fairy Lamp Newsletter, Fairy Lamps by L.G. Wright - Part I, Issue XII, August 1999.



**Moon & Star, #44**

Four-piece with the moon and star pattern on the dome, a crystal lamp cup and candle cup and a matching pedestal base - 6" h x 4" d; introduced in 1972 in A, BS and R (Ref. 5,

pp. 61,120); also in B and G. (Mold sold to Weishar in May 1999).



**Hobnail, #33** Four-piece with an all-over fine hobnail pattern on the dome, a crystal lamp cup and candle cup and a matching footed base with down-turning ruffles around the top - 6

5/8" h x 5 1/4" d; in A, AS, B, BS, G, GS, R and RS (Ref. 6); introduced in 1972. (Mold sold to Aladdin in May 1999).



**Embossed Rose, #34** Four-piece with an all-over deeply embossed rose pattern on the dome, a crystal lamp cup and candle cup and a matching footed base with down-turning ruffles around the top - 6

1/4" h x 5 1/4" d; in A, AS, B, BS, C, G, GS, R, RS, Va and VaS on a down-fluted base; introduced in 1973. (Mold sold to Aladdin in May 1999).



**Embossed Rose Triangle, #77-16**

Four-piece with an all-over deeply embossed rose pattern on the dome, a crystal lamp cup and candle cup and a

matching shallow tricorner base - approx. 6" h x 8" d; in A, B, G and GS at least (Ref. 1, p.139; G was sold at auction in May 1999 from the museum collection; not many were made because the inner corners sagged

during cooling so the lamp cup would not fit; the base was also sold separately as a nappy, #77-47); introduced in 1973. (Mold sold to Fenton in May 1999).



**Stipple Star, #59-8** Four-piece with a star pattern on an all-over fine stippled background on the dome, a crystal lamp cup and candle cup and a matching pedestal base with either a straight or wavy fluted top rim - 7" h x 5 1/2" d; in A, AS, B and R; introduced in 1976; G added in 1990s. (Mold sold to Castle/AA in May 1999).



**Thistle, #64-33** Four-piece with alternating panels of thistle and starburst patterns, a crystal lamp cup and candle cup and a matching footed base - 6" h x 4" d; in C only; introduced in 1976 (early ones were embossed with

the Higbee Glass Co. bee inside the base, Ref. 7). (Mold sold to Aladdin in May 1999).



**Sweetheart, #77-115** Four-piece with a beaded heart pattern on a stippled background on the dome, a crystal lamp cup and candle cup and a matching pedestal base with either a straight or wavy fluted top rim - 8" h x 4" d; in A, B, C, G and R; introduced in

1976; #77-115D hand decorated with red and gold highlights on crystal and with prisms hanging from rim of base, offered in 1997 (Ref. 8).

**Miscellaneous**

Two-piece Flame Lamp, 1962 (Ref. 1, p. 167) (Sold to unknown in May 1999); Two-

piece art glass shades on simple clear glass lamp cups such as cranberry opalescent Swirl optic hurricane lamp style; cranberry opalescent Honeycomb optic (Ref. 9, p. 69).

### References:

1. James Measell and W.C. "Red" Roetteis, The L.G. Wright Glass Co., The Glass Press, Inc., Marietta, OH 45750-0553 (1997).
2. Xeroxed pages of L.G. Wright Catalogs from 1960s and 1970s.
3. Antique & Collectors Reproduction News, Vol. 8, No. 9, September 1999, p. 102ff.
4. Dorothy Hammond, More Confusing Collectibles, Vol. 2, C.B.P. Publishing Co. Wichita, KS (1972), p. 13.
5. George & Linda Breeze, Mysteries of the Moon & Star, self-published (1994), purchased in 1997 at the L.E. Smith Glass Co. showroom, Mt. Pleasant, PA.
6. Dorothy Hammond, Confusing Collectibles, Wallace-Homestead, Des Moines, IA (1969; rev. ed. 1979), p.151.
7. Lloyd & Nan, "Embossed Glass Logos", Fairy Lamp Newsletter, Issue III, May 1997, p. 3.
8. L.G. Wright advertisement, Glass Collector's Digest, Volume X-5, p.60, Feb/Mar 1997.
9. Audrey L. Humphrey, "The Seven-Year Itch", Glass Collector's Digest, Volume III-6, p.66-71.

*Editor: If you would like to know more about the L. G. Wright liquidation auction, there is an article, "End of an Era-L.G. Wright Glass Co. Liquidated at Auction," by one of our members, Johanna Billings<sup>2</sup> in the Glass Collector's Digest, Volume XIII, Number 3, October/November, 1999, pgs. 65-70. It contains information about Wright's pattern molds, photos of some of there products, and additional information on the companies that "dominated" the bidding.*

---

<sup>2</sup> Johanna S. Billings, a free lance writer, is co-founder of the Rose Bowl Collectors. She is author of the recently published book Collectable Glass Rose Bowls (Antique Trader Books).