

Excerpt from:

Confusing Collectables by Dorothy Hammond, 1969

SATIN GLASS or MOTHER-OF-PEARL GLASS

Satin glass was produced in this country during the late 1800's by the Phoenix Glass Company in Beaver, Pennsylvania, and by the Mt. Washington Glass Company, New Bedford, Massachusetts. Since that time it has become one of the most popular collectibles offered to the glass-conscious public. This glass has, with few exceptions, an outer surface that glows with a smooth satin matte finish, which was produced by subjecting the piece to hydrofluoric acid. Satin glass is composed of two layers, with the pattern showing through to the outside of the piece. Patterns are unlimited in number, but the ones most frequently found are the Diamond Quilted, Herringbone, Swirl and Raindrop. Satin glass was produced in one solid color, two colors blended, a single color shading light to dark, or a number of colors, making for added attractiveness.

The first reproductions of Satin glass to cause consternation among collectors appeared during the 1930's; others appeared about six years ago. These later pieces are easily recognized. Actually, they are so obviously new that they should not deceive anyone, because most of the shapes found in the new Satin glass are unlike any known old ones. It should also be noted that many pieces of the new ware have no specific pattern, but a considerable quantity of Diamond Quilted pieces are on the market, along with the Raindrop pattern and a very poor example of the Herringbone pattern.

The importers of this new Satin glass sell it as new Satin glass. Articles made in Italy are easy to identify, as the pieces are heavier and the

layers of glass appear thick. Old pieces of Satin glass are exquisite in texture and light in weight. Satin glass produced in England is of better quality than the Italian. The glass is thinner and is lighter weight, and amateur collectors have been fooled by it. However, the distinct white (chalky) lining, rough texture, and the quality of the glass gives these new pieces away. Other distinguishing features of the new Satin glass are:

- 1) Thin reeded handles on the pitchers, which are too small in diameter when compared with the old (1 might add that these have been applied too clumsily).
- 2) The crimped top edges on the pitchers and vases are poorly done. Many show tell-tale tool marks, which never appear on the original old pieces.
- 3) Every piece of this new ware that I have examined has a rough pontil, often sharp enough to cut the finger. However, pieces that have been artificially aged are turning up with unpolished ground pontils.

Listed below are the new Satin glass pieces known to have been produced up to the present time. They can be found in the following colors: blue, yellow, pink, apricot, raspberry, green and red, with many examples shading to a light tan or white.

Bowls in various sizes (some footed), plain and decorated

Creamer and Sugar

Cruet

Fairy Lamp

Miniature Lamp

Pickle Castor

Pitchers, water and milk

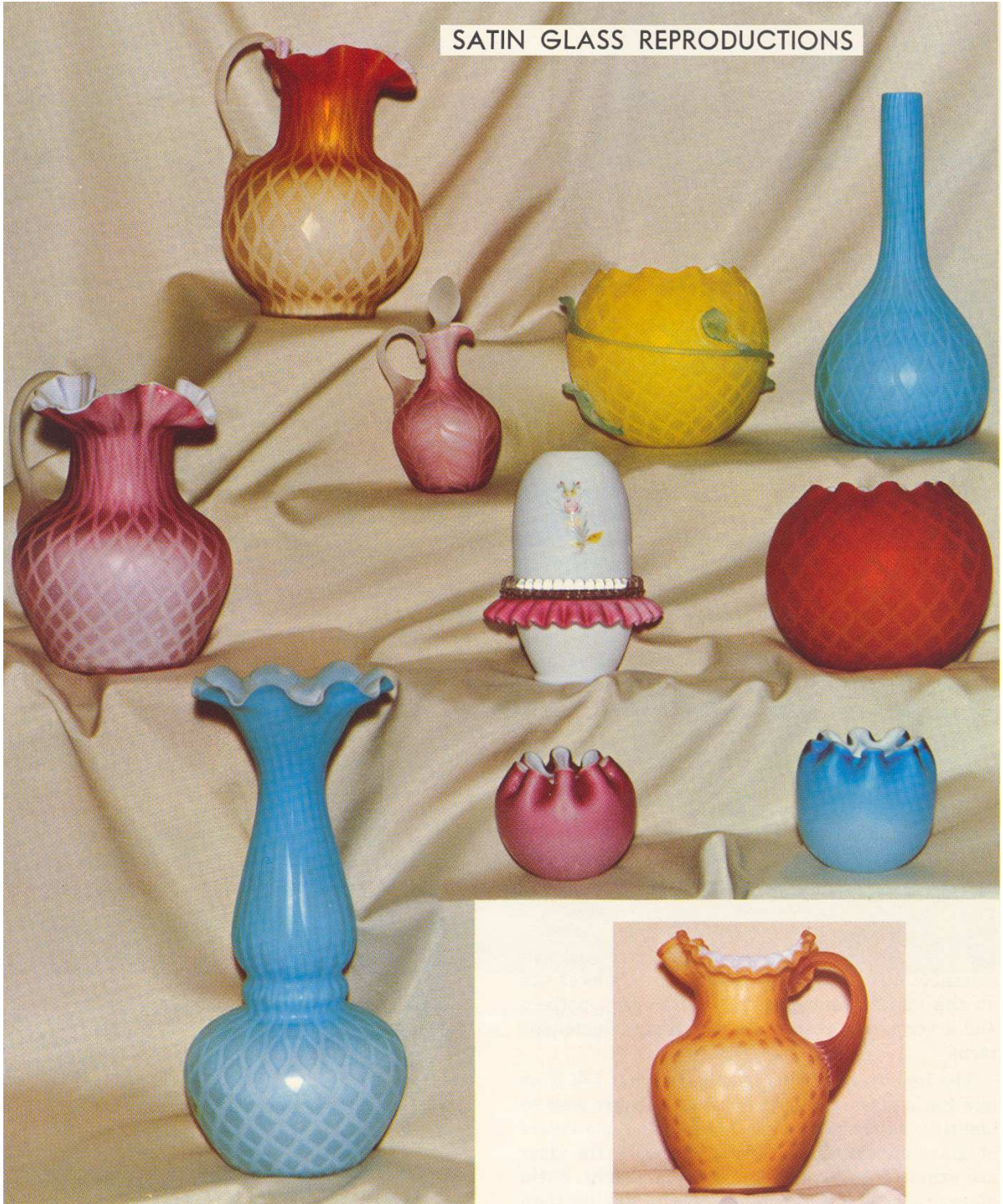
Salt and Pepper Shakers

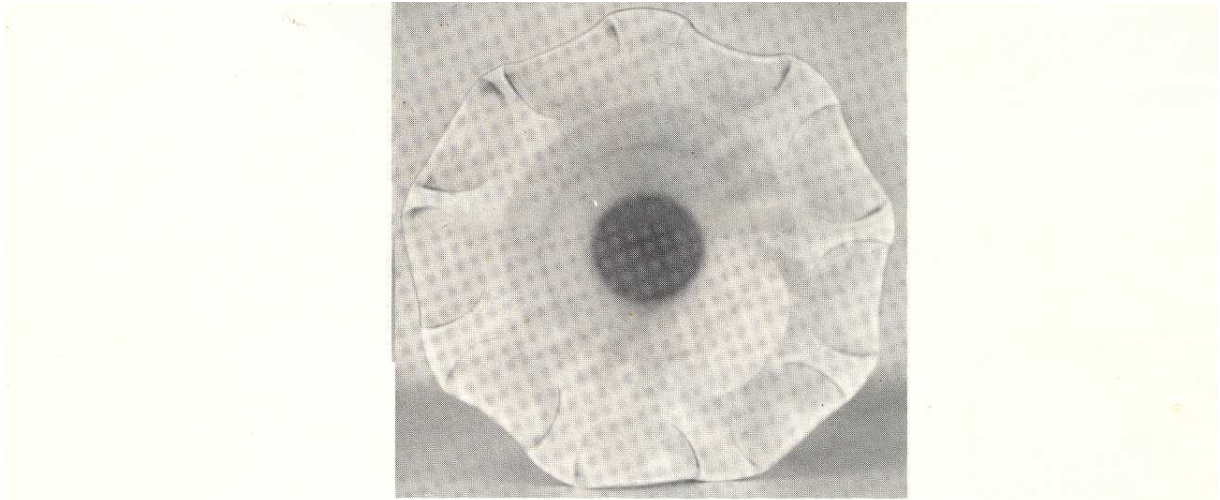
Toothpick Holder

Tumbler

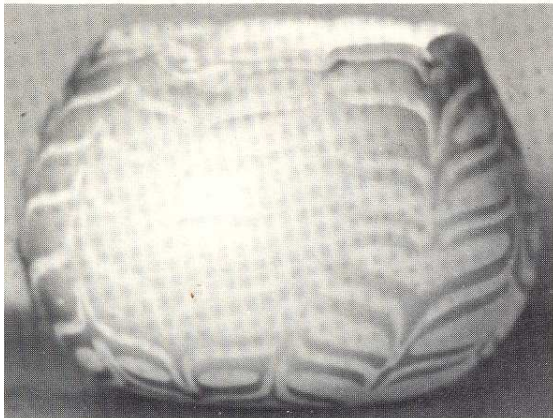
Vases in various sizes

SATIN GLASS REPRODUCTIONS





TOP VIEW OF REPRODUCED
M.O.P. VASE ILLUSTRATED ON
OPPOSITE PAGE. Note "U"
shaped crimped edge, not found
on 19th century pieces.



Reproduced Rose Bowl in the M.O.P. Herringbone
Pattern. (Note the poorly crimped edges.)



New Yellow Quilted Satin Glass with applied
decoration.